

Performance certified is for installation type B - free inlet, ducted outlet.
Power rating (kW) does not include transmission losses.
Performance ratings do not include the effects of appurtenances (accessories).

Technical Data

Impeller Data

Impeller diameter	D_r	455 mm
Number of blades	z	12
Moment of Inertia	J	0.6 kgm ²

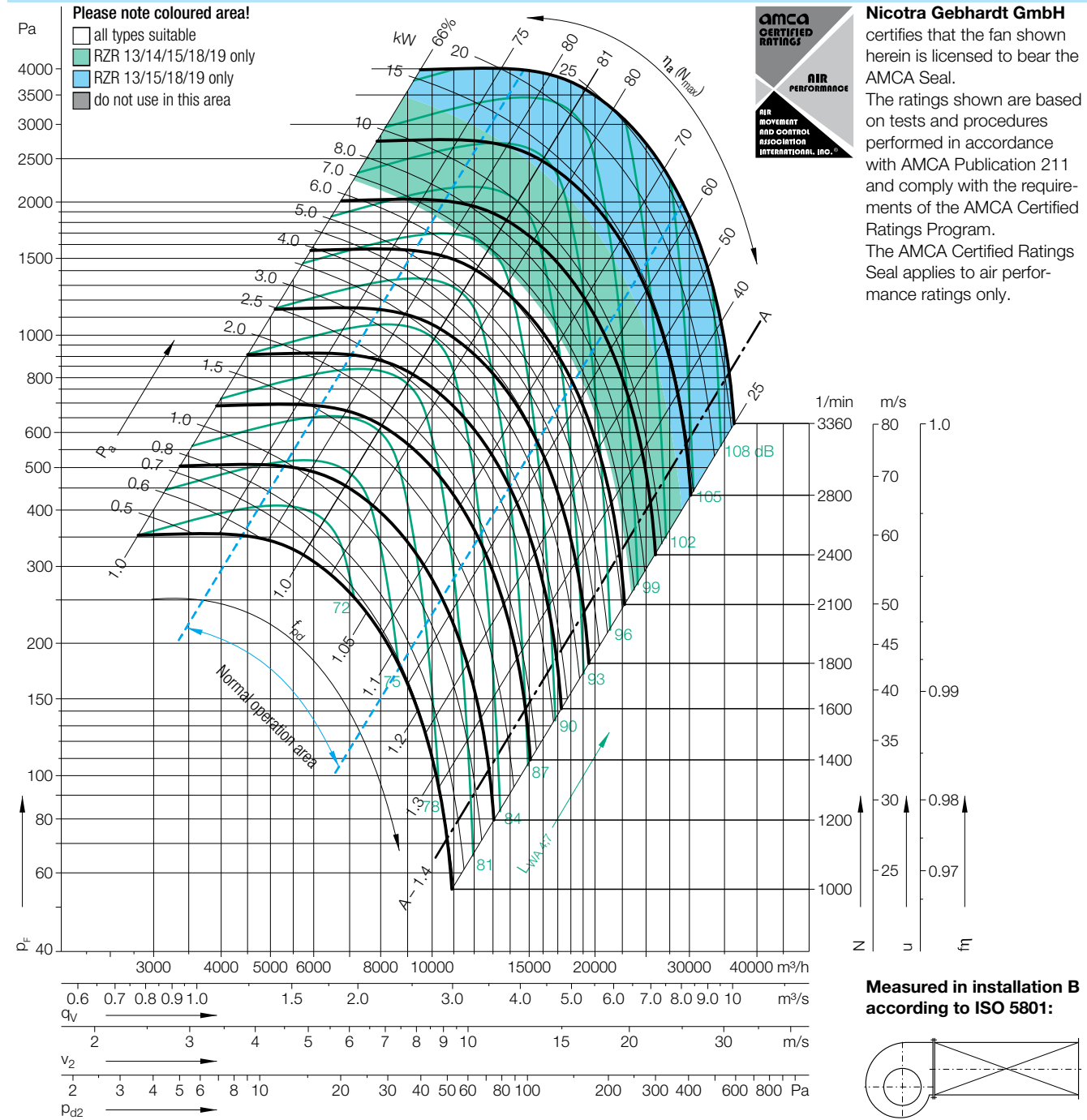
Impeller Data

Impeller weight	m	15.8 kg
Density of media	ρ_1	1.2 kg/m ³
Tolerance class (DIN 24166)		1

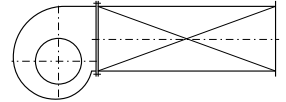
Speed limits N_{max} for ATEX execution

RZR 11/12	2111	1/min
RZR 18	2410	1/min
RZR 13	2922	1/min

Performance Curves



Measured in installation B according to ISO 5801:



Relative sound power level for inlet side L_{Wrel7} at octave centre frequencies f_c

Speed	Duty point	63	125	250	500	1000	2000	4000	8000	Hz
≤1679 1/min	≤0.8 q_{Vopt}	0	2	0	-3	-6	-9	-12	-19	dB
	>0.8-1.2 q_{Vopt}	-2	1	-2	-3	-6	-8	-14	-20	dB
	>1.2-1.6 q_{Vopt}	-3	0	-1	-3	-6	-8	-14	-21	dB
	>1.6 q_{Vopt}	-5	-3	-3	-3	-6	-7	-13	-21	dB
	>1.6 q_{Vopt}	-5	-3	-3	-3	-6	-7	-13	-21	dB
>1679 1/min	≤0.8 q_{Vopt}	-2	-1	-3	-1	-6	-10	-15	-21	dB
	>0.8-1.2 q_{Vopt}	-7	-4	-5	-1	-6	-9	-14	-21	dB
	>1.2-1.6 q_{Vopt}	-10	-7	-8	-1	-5	-8	-13	-21	dB
	>1.6 q_{Vopt}	-10	-8	-8	-2	-6	-8	-11	-18	dB
	>1.6 q_{Vopt}	-10	-8	-8	-2	-6	-8	-11	-18	dB

Relative sound power level for discharge side L_{Wrel4} at octave centre frequencies f_c

Speed	Duty point	63	125	250	500	1000	2000	4000	8000	Hz
≤1679 1/min	≤0.8 q_{Vopt}	13	7	4	-3	-8	-14	-17	-25	dB
	>0.8-1.2 q_{Vopt}	10	5	3	-2	-7	-13	-17	-25	dB
	>1.2-1.6 q_{Vopt}	7	2	2	-2	-6	-12	-18	-27	dB
	>1.6 q_{Vopt}	5	1	1	-2	-6	-10	-17	-27	dB
	>1.6 q_{Vopt}	5	1	1	-2	-6	-10	-17	-27	dB
>1679 1/min	≤0.8 q_{Vopt}	11	4	2	0	-7	-12	-17	-24	dB
	>0.8-1.2 q_{Vopt}	7	1	-2	-3	-6	-10	-15	-23	dB
	>1.2-1.6 q_{Vopt}	3	-2	-4	-3	-5	-9	-14	-23	dB
	>1.6 q_{Vopt}	2	-3	-5	-3	-5	-9	-12	-21	dB
	>1.6 q_{Vopt}	2	-3	-5	-3	-5	-9	-12	-21	dB